

EXTERIOR STORM PROOF LOUVER, RE: STRUCT FOR WIND SPEED DESIGN LOADS

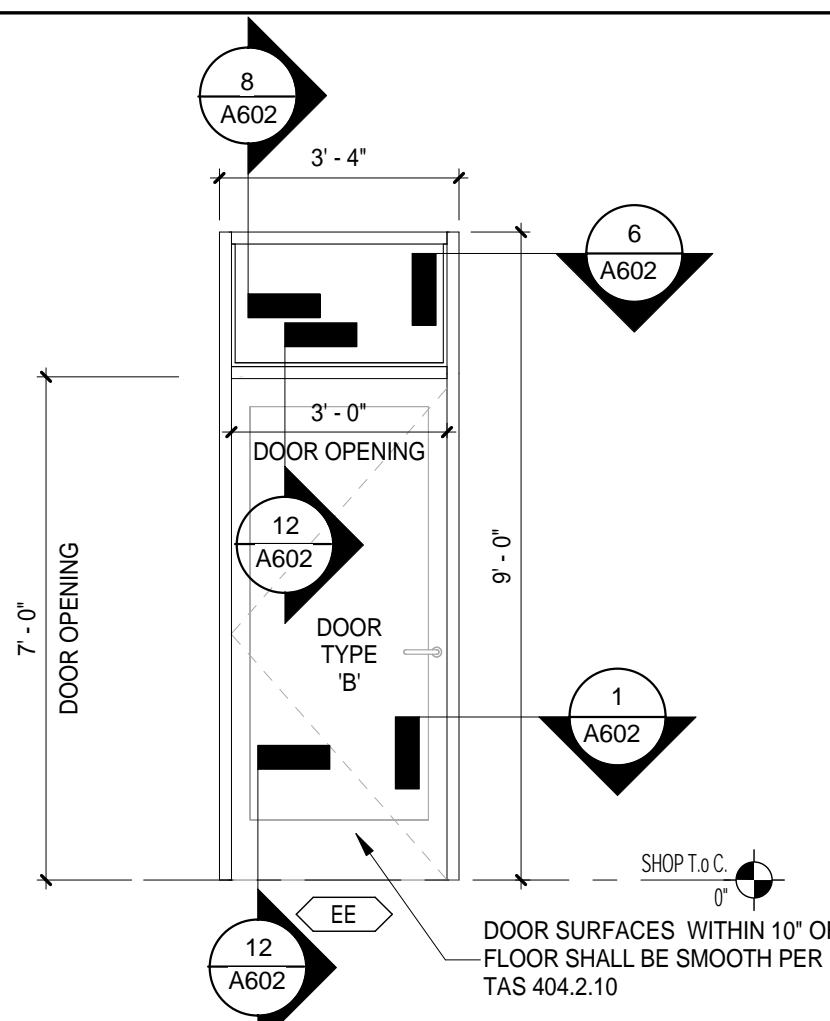
L1 - LOUVER ELEVATION 30

SCHEDULE - EXTERIOR DOOR

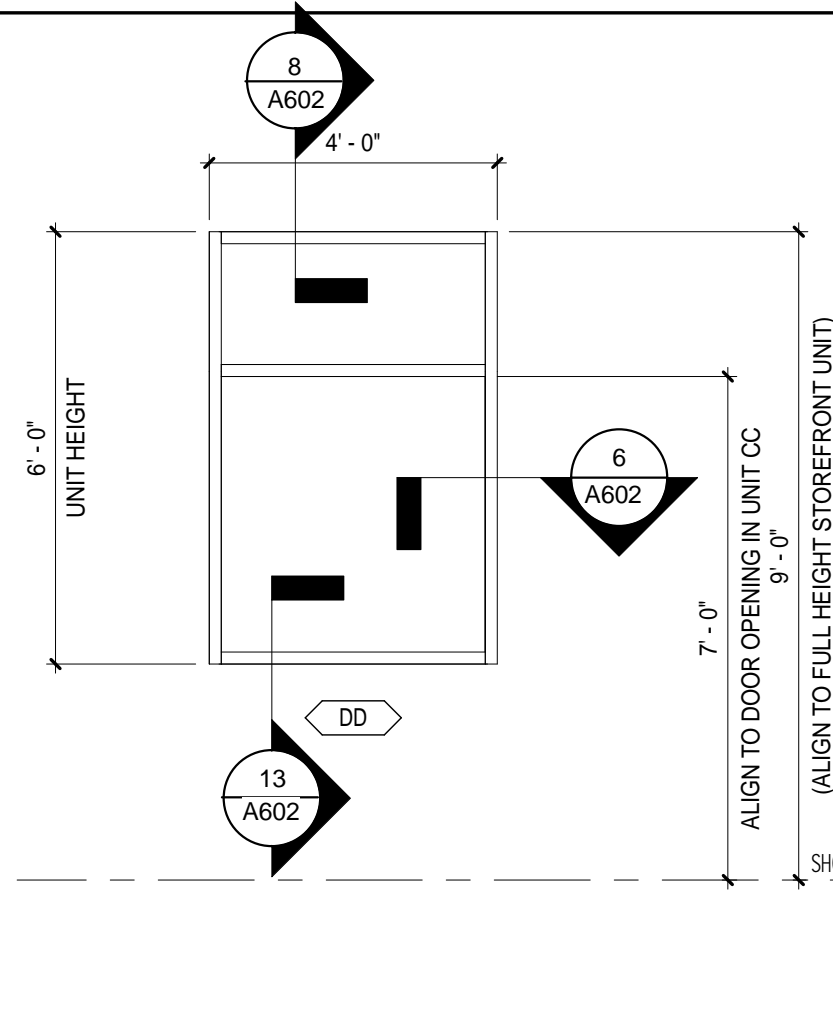
Table with columns: #, Width, Height, Door Type, Door Material, Door Finish, Frame Material, Frame Finish, Glazing, Hdw Type, Remarks. Lists door specifications for various rooms.

HOLLOW METAL DOORS:

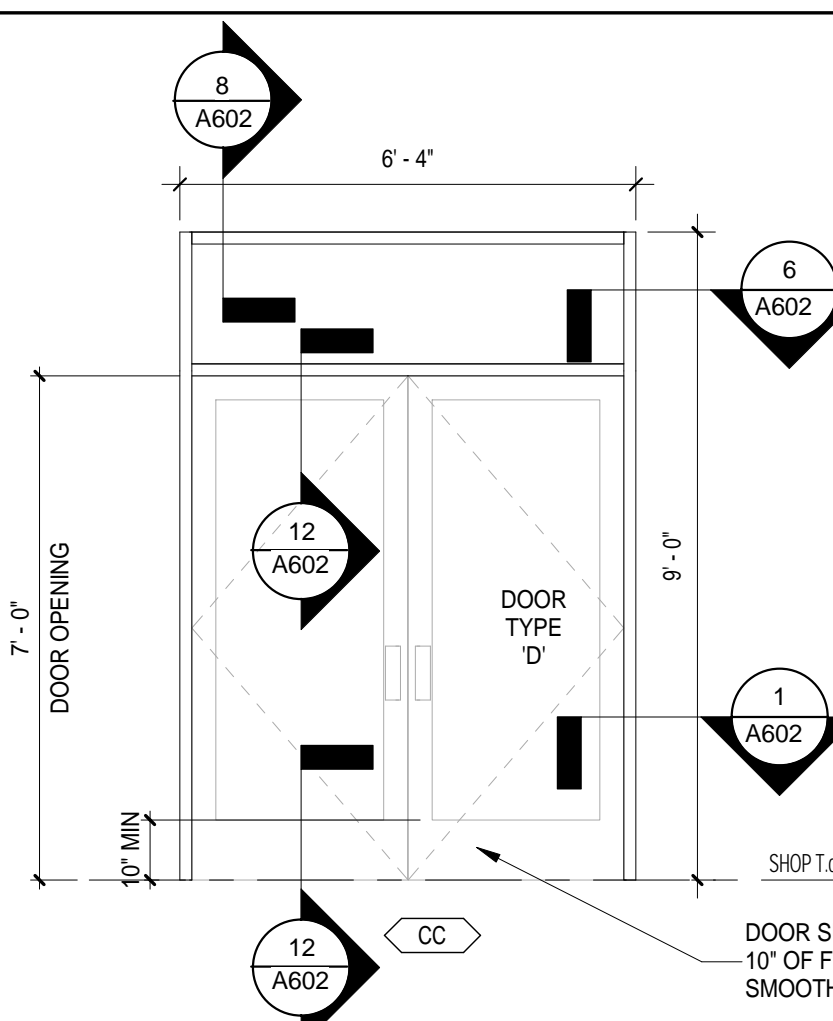
- FLUSH
CORE - INTERNAL STEEL STIFFENERS
BOTTOM EDGE TO BE MORTISED FOR WEATHER STRIPPING
MORTISE LOCK PREPARATION
DOOR-16 GA MINIMUM / FRAME-14 GA MINIMUM



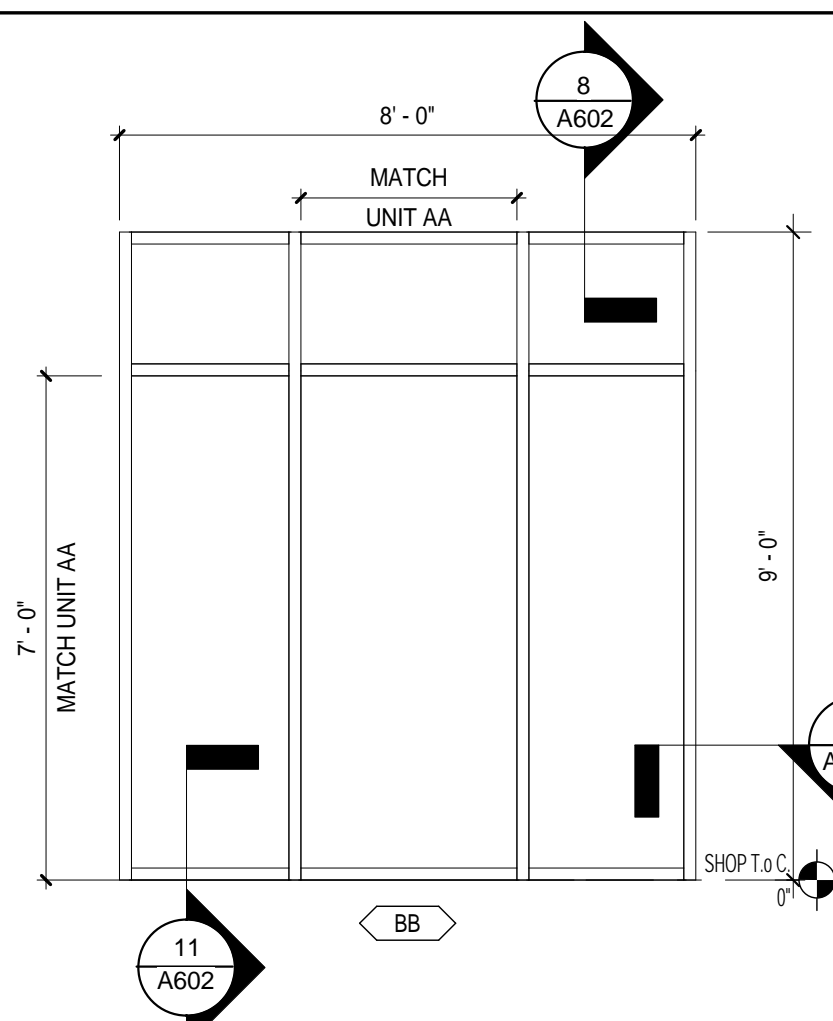
STOREFRONT EE ELEVATION 25



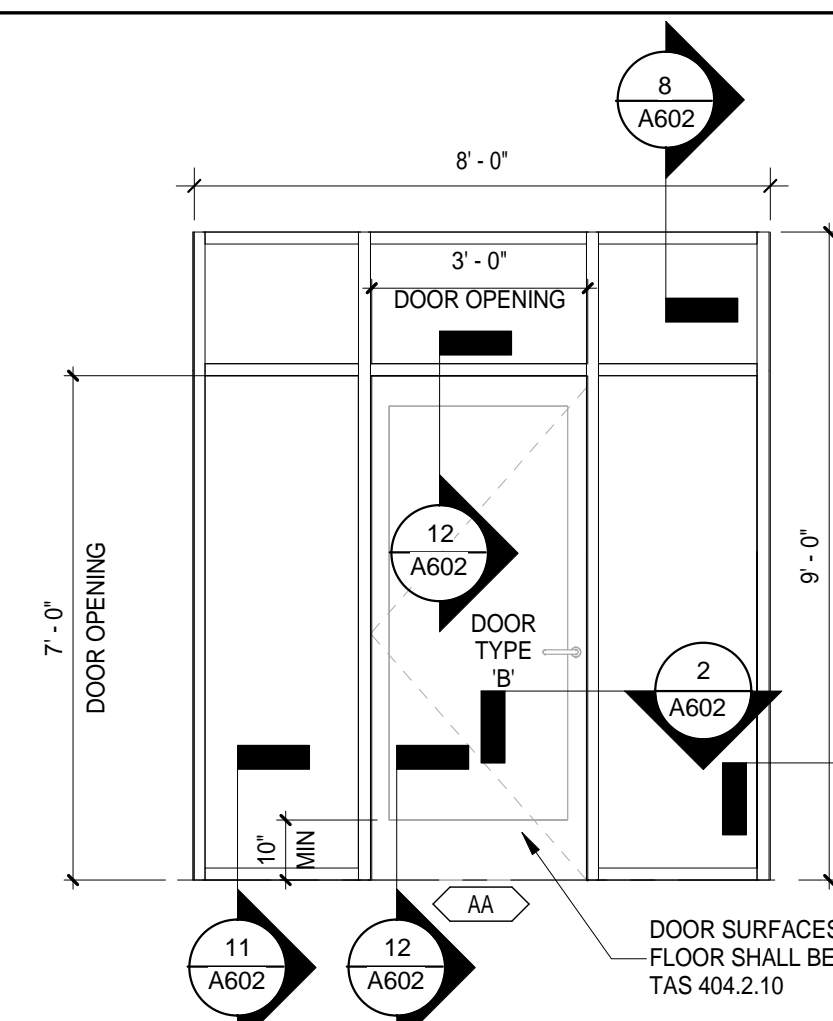
STOREFRONT DD ELEVATION 20



STOREFRONT CC ELEVATION 15



STOREFRONT BB ELEVATION 10



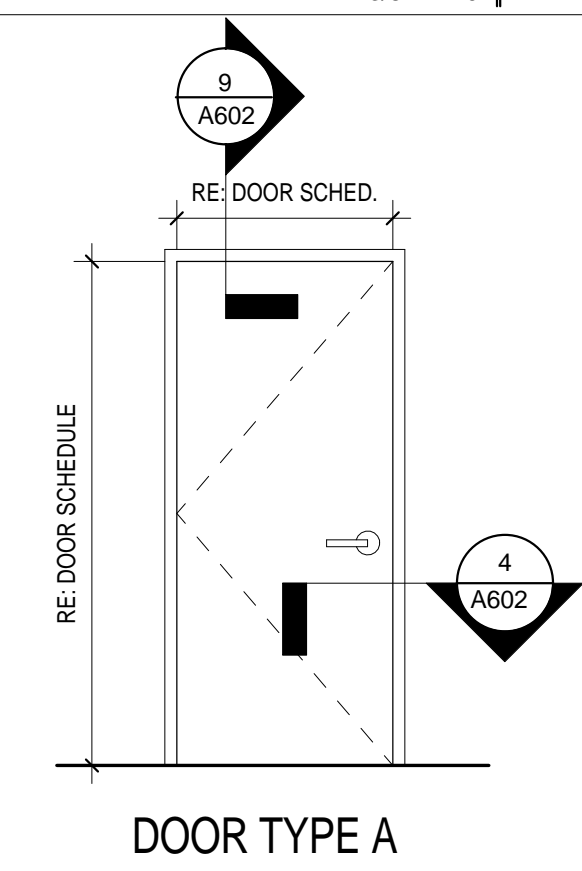
STOREFRONT AA ELEVATION 5

SCHEDULE - INTERIOR DOOR

Table with columns: #, Width, Height, Door Type, Door Material, Door Finish, Frame Material, Frame Finish, Hdw Type, Remarks. Lists interior door specifications.

NOTE: DOORS, FRAMES AND HARDWARE SHALL COMPLY WITH THE REQUIREMENTS OF APPLICABLE CITY AND STATE BUILDING CODES.

DOOR - EXTERIOR TYPES 3/8" = 1'-0"



DOOR - INTERIOR TYPES 3/8" = 1'-0"

DOOR HARDWARE TYPES N.T.S.

- TYPE 1 - (ENTRY)
TYPE 10 - (SINGLE DOOR MORTISE LOCK W/ CLOSER)
TYPE 2 - (STOREROOM LOCKSET)
TYPE 3 - (CLASSROOM LOCKSET W/ CLOSER)
TYPE 4 - (PRIVACY LOCK)
TYPE 5 - (MULTI-RESTROOM)
TYPE 6 - (PASSAGE)
TYPE 11 - (DOUBLE DOOR W/ CLOSER)
TYPE 12 - (STOREFRONT ENTRANCE DOOR W/ MORTISE LOCK + CLOSER)

NOTE: ALL INTERIOR DOORS SHALL BE OPERABLE WITH A SINGLE EFFORT (NO GRASPING OR WRIST MOVEMENT) MOUNTED BETWEEN 34" AND 44" ABOVE FINISH FLOOR.

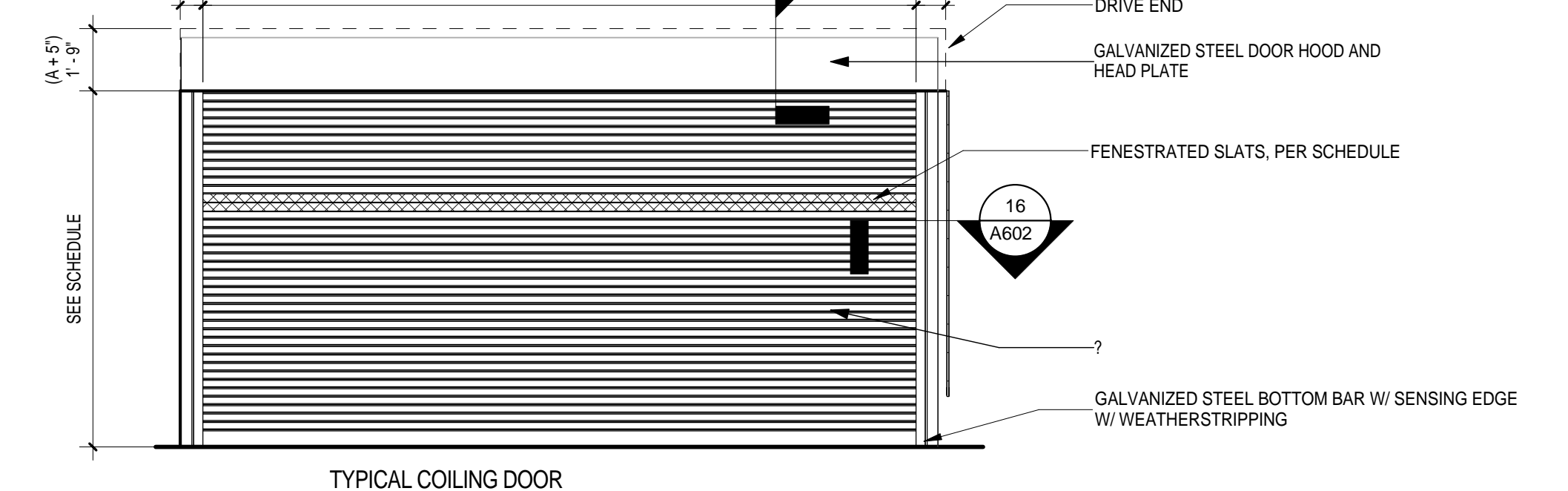
SCHEDULE - ROLL-UP DOOR

Table with columns: QTY, TYPE, WALL OPENING DIMENSIONS, Manufacturer, SERIES, SLAT TYPE, Type Comments, REMARKS. Lists roll-up door specifications.

VENTILATED SLATS FOR CROSS-VENTILATION: PROVIDE COLOR SAMPLES TO ARCHITECT FOR SELECTION

INDIVIDUAL OPENING SIZE: 0.625" x 3" = 0.013 SQ FT PER OPENING
OF OPENINGS FOR 20'-0" DOOR: 55 / TOTAL OPENING AREA PER SLAT = 0.715 SQ FT
TOTAL VENT AREA PROVIDED PER 20'-0" DOOR = 1.43 SQ FT

OF OPENINGS FOR 16'-0" DOOR: 44 / TOTAL OPENING AREA PER SLAT = 0.572 SQ FT
TOTAL VENT AREA PROVIDED PER 16'-0" DOOR = 1.716 SQ FT



TYPICAL COILING DOOR

DOOR - ROLL-UP TYPE 1/4" = 1'-0"

GENERAL NOTES - FINISH

- 1 REFER TO SHEET G001 INDEX FOR GENERAL NOTES, SYMBOL LEGEND AND OTHER IMPORTANT INFORMATION.
2 ALL FLOOR FINISHES SHALL BE INSTALLED IN ACCORDANCE WITH THE MANUFACTURER'S SPECIFICATIONS. FLOORING CONTRACTOR IS RESPONSIBLE FOR INSPECTION OF SLAB CONDITION PRIOR TO FLOOR FINISH INSTALLATION.
3 MATERIALS SPECIFIED ARE REFERENCED BY A PRODUCT NAME AND NUMBER. THE CONTRACTOR SHALL VERIFY THAT THE PRODUCT NAME MATCHES THE PRODUCT NUMBER PRIOR TO ORDERING MATERIALS. NOTIFY ARCHITECT OF ANY DISCREPANCIES. CONTRACTOR IS RESPONSIBLE FOR ORDERING SUFFICIENT QUANTITIES OF ALL MATERIALS TO ENSURE A COMPLETE INSTALLATION. RUBBER BASE SHALL HAVE PREFORMED CORNERS.
4 CONTRACTOR SHALL PROVIDE SAMPLES OF ALL FINISHES FOR ARCHITECT'S APPROVAL PRIOR TO ORDERING MATERIALS.
5 NO SUBSTITUTE SHALL BE ACCEPTED FOR ANY FINISHES WITHOUT WRITTEN APPROVAL BY THE ARCHITECT. REQUESTS FOR SUBSTITUTIONS MUST BE SUBMITTED IN THE TIME FRAME SO AS NOT TO CAUSE ANY DELAY IN ORDERING OR ACQUIRING THE ORIGINALLY SPECIFIED MATERIAL.
6 FLAME SPREAD RATINGS FOR INTERIOR FINISHES ARE TO BE IN ACCORDANCE WITH APPLICABLE CODES.
7 ALL PAINT SHALL BE APPLIED IN ACCORDANCE WITH THE MANUFACTURER'S SPECIFICATIONS FOR FINISH SPECIFIED. PROVIDE A TWO COAT MINIMUM APPLICATION.
8 WALLS SCHEDULED TO BE PAINTED SHALL BE LATEX PAINT, ROLLED ON, UNLESS NOTED OTHERWISE. E MANUFACTURER'S RECOMMENDED PRIMER AND FOLLOW MANUFACTURER'S RECOMMENDED INSTALLATION FOR APPLICATION.
9 INSPECT GYPSUM BOARD AND VERIFY THAT CONDITIONS ARE SUITABLE FOR THE APPLICATION OF WALL COVERING PRIOR TO INSTALLATION. USE MANUFACTURER'S RECOMMENDED PRIMER AND FOLLOW MANUFACTURER'S RECOMMENDED INSTALLATION FOR APPLICATION.
10 CONTRACTOR SHALL PAINT ONE WALL FOR ARCHITECT'S APPROVAL WITH EACH COLOR SPECIFIED. PRIOR TO PURCHASING THE BALANCE OF THE PAINT FOR THE REMINDER OF THE JOB.
12 PAINT ALL 4 SIDES OF COLUMNS, INCLUDING COLUMNS AT EXTERIOR WINDOWS.
13 ALL FIRE EXTINGUISHER CABINET DOORS SHALL BE PAINTED. SEE G-002 FOR LOCATIONS.

SCHEDULE - ROOM FINISH

Table with columns: Room #, Room Name, TRIM (Base, Window, Door, Floor), SURFACES (Walls, Ceiling, Cabinetry), MILLWORK (Countertop, Backsplash), Remarks. Lists room finish specifications.

- FLOORS: F-1 SEALED & STAINED CONCRETE, F-2 BROOM-FINISHED CONCRETE, F-3 ACID RESISTANT EPOXY
WALLS: PT-1 PAINT - TBD, CT-1 CERAMIC WALL TILE
BASE: B-1 RUBBER BASE, B-2 CERAMIC WALL TILE TO FLOOR
CEILING: C-1 5/8" TYPE 'X' GYP. BD., C-2 ACCOUSTICAL CEILING TILE & GRID
CABINETS: PG-1 PAINT GRADE CABINETS
COUNTER TOP: SS-1 SOLID SURFACE
CEILING GRID: MFR: ARMSTRONG, PROD: PLYLITE XL (15'16'), EXPOSED TEE, COLOR: WHITE, SIZE: 2'X2'

Table with columns: REV., DESCRIPTION, DATE. Lists revision history.