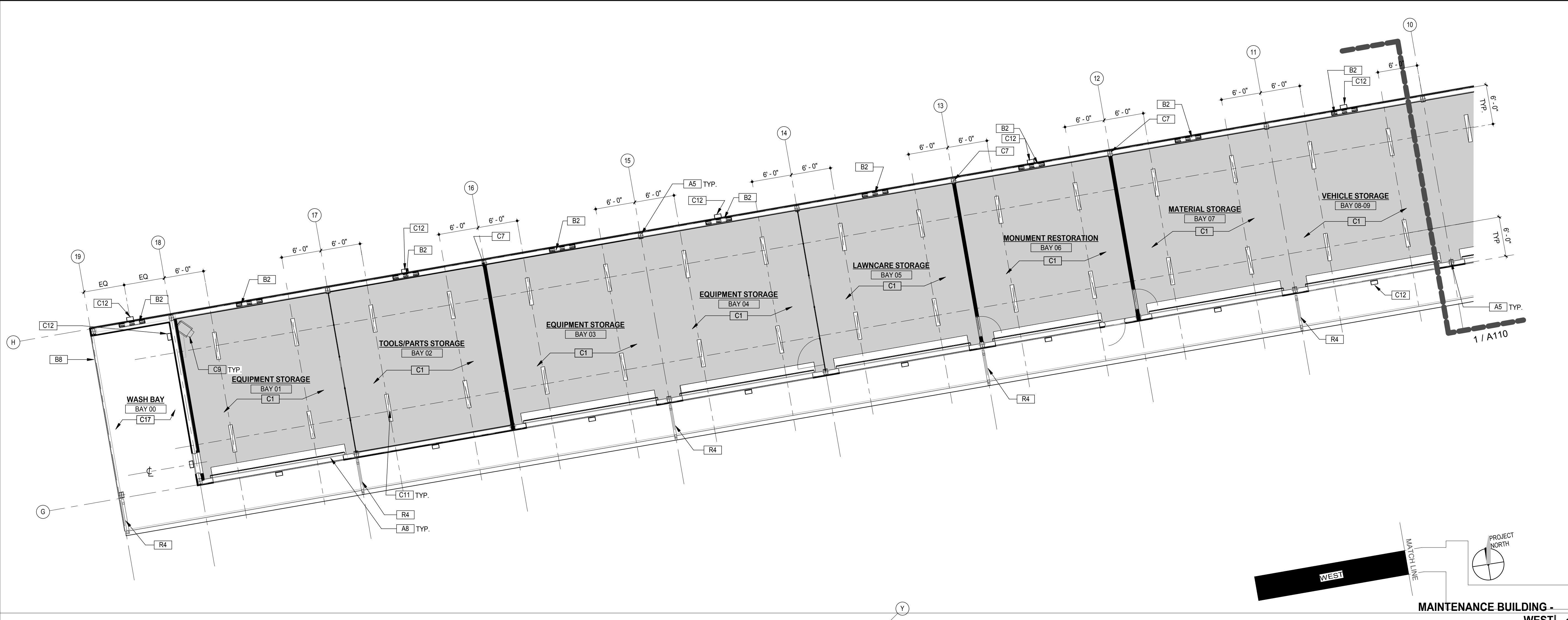


5/7/2019 2:29:29 AM
 ID:\A-EPAD\user\calin\REVIT LOCAL\2018.04.19_R18_Glenwood\MaintenanceShop_Central\reflected.mxd
 UPDATED CONSTRUCTION SET
 Dillon Kyle Architects



MAINTENANCE BUILDING - WEST
 1/8" = 1'-0"
9



MAINTENANCE BUILDING - EAST
 1/8" = 1'-0"
1

KEYED NOTES

#	DESCRIPTION
A5	STRUCTURAL FRAME, TYPICAL, RE METAL BUILDING MANUFACTURER
A8	ROLLING STEEL DOOR WITH ELECTRIC POWERED OPERATION ACCESSIBLE FROM THE EXTERIOR, WITH MINIMUM 2 VENTILATED SLATS, SEE DOOR SCHEDULE
A12	RATED PARTITION WALL, SEE SHEET G003 FOR UL DESIGN LISTING INFORMATION
B2	EXTERIOR STORM PROOF LOUVER, RE: STRUCT FOR WIND SPEED DESIGN LOADS
B8	OPEN WALL, NO METAL PANELS THIS SIDE
C1	EXPOSED DECK AND STRUCTURE, RE: FINISH SCHEDULE
C3	2X2 ACOUSTICAL CEILING TILE AND GRID, RE: FINISH SCHEDULE/TYPES
C6	CEILING SURFACE MOUNTED LIGHT FIXTURE, RE: MEP
C7	PARTITION TO ATTACH TO UNDERSIDE OF ROOF DECK, RE: PARTITION TYPES
C9	CEILING MOUNTED GAS-FIRED HEATER
C10	CEILING MOUNTED VENTILATION FAN DUCTED TO EXTERIOR WALL (NOT ROOF)
C11	SUSPENDED SEALED INDUSTRIAL LED STRIP LIGHT RATED FOR WET LOCATION, SEE MEP DRAWINGS
C12	SURFACE MOUNTED LIGHT FIXTURE, RATED FOR WET LOCATION, RE: LIGHTING SCHEDULE AND MEP DRAWINGS
C15	SURFACE MOUNTED JUNCTION BOX, TYPICAL, RE: MEP DRAWINGS
C17	METAL SOFFIT PANELS, RE METAL BUILDING MANUFACTURER
R4	PREFINISHED METAL BOX DOWNSPOUTS, RE METAL BUILDING MANUFACTURER
R5	PREFINISHED CONTINUOUS METAL BOX GUTTER WITH FLANGE, COORDINATE LOCATIONS OF GUTTER EXPANSION JOINT WITH DOWNSPOUTS, RE METAL BUILDING MANUFACTURER

LEGEND

	GYPSUM BOARD		METAL SOFFIT PANEL / ROOF LINER BY METAL BUILDING MANUFACTURER
	ACOUSTICAL CEILING TILE		SURFACE MOUNTED LIGHT FIXTURE
	EXPOSED INSULATION LINER SYSTEM		UNDERCABINET FIXTURE
	SWITCH LABEL		2X4 LIGHT FIXTURE
	SINGLE POLE SWITCH		SUSPENDED LIGHT FIXTURE
	DIMMER SWITCH		EXHAUST FAN
	THREE-WAY SWITCH		SMOKE DETECTOR W/ BATTERY BACKUP AND CARBON MONOXIDE ALARM
	FOUR-WAY SWITCH		SPEAKER
	HINGE SWITCH		BOOKCASE LIGHT
	RECESSED PICTURE LIGHT		HVAC - SUPPLY DIFFUSER
	PENDANT DOWNLIGHT		
	WALL MOUNTED LIGHT		
	SURFACE MOUNTED FIXTURE		
	EXTERIOR SURFACE MOUNTED LIGHT FIXTURE		
	RECESSED DOWNLIGHT		
	RECESSED WALL WASHER		

GENERAL NOTES - REFLECTED CEILING PLAN

- CONTRACTOR SHALL REVIEW EXISTING PLENUM DEPTH AND SPACE AVAILABLE BENEATH DUCTWORK, CONDUITS, PIPING, ETC. AND CONFIRM THERE IS SUFFICIENT SPACE AVAILABLE FOR ALL LIGHT FIXTURES AND CEILING TREATMENTS. CONTRACTOR SHALL NOTIFY ARCHITECT OF ANY AND ALL CONFLICTS WITH THE DESIGN INTENT.
- REFER TO SHEET G001 INDEX FOR GENERAL NOTES, SYMBOL LEGEND AND OTHER IMPORTANT INFORMATION.
- FIELD VERIFY ALL EXISTING CONDITIONS AND REPORT ANY DISCREPANCIES IN PLAN TO THE ARCHITECT/ENGINEER BEFORE ANY WORK COMMENCES.
- THE REFLECTED CEILING PLANS (ARCHITECTURAL) ARE TO BE USED FOR THE LOCATION OF LIGHT FIXTURES AND OTHER CEILING MOUNTED CONSTRUCTION. REFER TO THE ELECTRICAL LIGHTING PLANS FOR ALL SPECIFICATIONS, CIRCUITING AND POWER REQUIREMENTS, AS WELL AS FOR LOCATION OF SWITCHES. NOTIFY ARCHITECT OF ANY DISCREPANCIES BETWEEN REFLECTED CEILING PLANS AND ELECTRICAL LIGHTING PLANS AND OBTAIN CLARIFICATION BEFORE COMMENCING CONSTRUCTION.
- INSTALL HOLD DOWN CLIPS AT PERIMETER PARTITIONS AND FOR ALL SUSPENDED CEILING LESS THAN FULL SIZE. INSTALL SUPPLEMENTARY HANGER WIRES AT LIGHT FIXTURES OR OTHER CEILING MTD. EQUIPMENT AS RECOMMENDED BY MANUFACTURER OR AS REQUIRED BY GOVERNING CODE.
- THE CEILING MODULE SHOWN ON THE REFLECTED CEILING PLAN SHALL GOVERN THE LOCATION OF LIGHT FIXTURES, ETC. WHERE SHOWN. SEE ARCHITECT FOR NEW LOCATION WHERE NECESSARY.
- LOCATE ALL RECESSED LIGHT FIXTURES IN CENTER OF CEILING TILE, UNLESS NOTED OTHERWISE.
- ALL TROFFER LIGHT FIXTURES TO BE LOCATED WITH FULL TILE DIMENSIONS, UNLESS NOTED OTHERWISE. DO NOT BREAK GRID TO ACCOMMODATE LIGHT FIXTURES OR MECHANICAL EQUIPMENT. NOTIFY ARCHITECT IF A NEW LOCATION IS NECESSARY.
- SEE MEP DRAWINGS FOR LOCATIONS OF FIRE ALARMS, STROBE LIGHTS, EXIT LIGHTS, SMOKE DETECTORS, ETC.
- ALL LIGHT FIXTURES SHALL BE SECURED WITH MIN 4 WIRES TO THE STRUCTURE ABOVE. USE 6 WIRES IF REQUIRED BY APPLICABLE CODE.
- THE CONTRACTOR SHALL COORDINATE AND COMBINE ALL WORK ABOVE GYPSUM BOARD CEILING AND SOFFIT AREAS TO ENSURE JUNCTION BOXES, VALVES, SWITCHES AND OTHER ELEMENTS REQUIRING ACCESS ARE INSTALLED AT COLLECTIVE LOCATIONS.
- REFER TO ELEVATIONS FOR LIGHTING MOUNTING HEIGHTS, TYPICAL.

DILLON KYLE ARCHITECTS

713.520.8792
 1500 W ALABAMA
 HOUSTON, TEXAS 77006
 www.dkarc.com

REGISTRATION NUMBER: 15331



05/07/2019
 COPYRIGHT INFORMATION:
 These drawings and specifications are copyrighted. They are not to be used on other projects or extensions to this project except by agreement in writing and with appropriate compensation to Dillon Kyle Architects, Inc. The contractor is responsible for confirming and consulting dimensions at the job site. The architect will not be responsible for construction means, methods, techniques, or procedures, or for the safety precautions and programs in connection with the project. Copyright 2018, Dillon Kyle Architects, Inc.

PROJECT INFORMATION:

UPDATED CONSTRUCTION SET

MAINTENANCE SHOP BLDG
GLENWOOD CEMETERY
2555 WASHINGTON AVE
HOUSTON, TEXAS 77007

REV.	DESCRIPTION	DATE
E	PRELIMINARY PRICING SET #1	04/17/2017
G	FOR PERMIT AND CONSTRUCTION	09/19/2017
H	PLAN CHECK COMMENT RESPONSE #1	10/27/2017
4	UPDATED CONSTRUCTION SET	12/27/2017
6	REVISION # - DIMENSION AND DETAIL ADJUSTMENTS	05/16/2018
12	REVISION 12 - LIGHTING	05/07/2019

SHEET CONTENTS:

REFLECTED CEILING PLANS

SHEET NUMBER:

A110